

# FlinSlim MPPT Elite Solar Inverter

5kW PV Input | Built-in Wi-Fi Monitoring | Grid Export Option



Rated Power  
4 KW 24 V



PV Array Power  
5000 W



MPPT Range  
120-450 VDC



Timer Setting  
For Load Priority



Solar Charge  
120 A



Compatible with  
Lithium Batteries



Removable  
Display



AC Charge  
100 A



## Direct Power from Solar & Wide PV Range

FlinSlim MPPT Elite allows you to choose on how to power your loads: Either share loads between solar & utility or share loads between solar & battery. FlinSlim MPPT Elite comes with high PV input capacity of 5KW. This is compatible with lead-acid/lithium ion/LiFePO4 batteries and can also be used without batteries



## Net Metering

This model is grid export ready model. All you need to do is change one setting when you have net meter installed and you are ready to export extra solar power generated.

### ✔ Feed-in to Grid + Load + Battery Charging

After running loads and charging batteries, all excess power generated will feed-in to the Grid if net metering is enabled and you have a net meter.

### ✔ Battery Backup when AC Fail

If Grid/Generator is not available, FlinSlim MPPT Elite will still continue to power the loads directly from the solar power



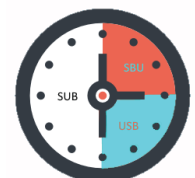
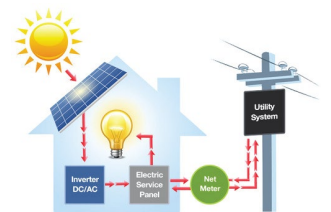
## Customizable Display

FlinSlim MPPT Elite is designed to offer great flexibility in user operation. Removable LCD screen & menu buttons allow you to customize more than 30 settings. All these parameters can be configured through the LCD panel or using WiFi monitoring as inverter comes with in-built WiFi



## Timer for Load Priority and Battery Charging

FlinSlim MPPT Elite gives you the option to select the mode you wish to run the loads and charge batteries during different times of the day. You get to select the specific hours when you wish the inverter to run in SUB and other modes to power your load or charge batteries and automatically the inverter will do that.



## Specifications of FlinSlim MPPT Elite Solar Inverter

MODELS		4kW-24V
MODEL NO	FT-4kW	
RATED POWER	4000 VA / 4000 W	
<b>INPUT</b>		
Voltage	230 VAC	
Selectable Voltage Range	170-280 VAC (For UPS Mode); 90-280 VAC (For Appliance Mode)	
Frequency Range	50 Hz/60 Hz (Auto sensing)	
<b>OUTPUT - Off-Grid Operation</b>		
AC Voltage Regulation (Batt. Mode)	230 VAC $\pm$ 5%	
Surge Power (for 5 seconds)	8000 VA	
Efficiency (Peak)	90-93%	
Transfer Time	15 ms (For UPS Mode); 20 ms (For Appliance Mode)	
Waveform	Pure Sine Wave	
<b>OUTPUT - Off-Grid Operation</b>		
AC Voltage Regulation (Batt. Mode)	230 VAC $\pm$ 5%	
Output Voltage Range	195.5 - 253VAC (Selectable)	
Output Frequency Range	49 Hz - 51 Hz	
<b>BATTERY</b>		
Battery Voltage	24 VDC	
Floating Charge Voltage	27 VDC	
Overcharge Protection	33 VDC	
<b>SOLAR CHARGER &amp; AC CHARGER</b>		
Solar Charger Type	MPPT	
Maximum PV Array Power	5000 W	
MPPT Voltage Range	120 - 450 VDC	
Max PV Open Circuit Voltage	500 VDC	
Maximum PV Charge Current	120 A	
Maximum AC Charge Current	100 A	
Maximum Charge Current	120 A	
<b>PHYSICAL &amp; COMMUNICATION</b>		
Dimension (D x W x H) mm	115 x 300 x 400	
Net Weight (kgs)	9 kgs	
Communication	USB/RS485/RS232/Dry-Contact/WiFi	
<b>OPERATING ENVIRONMENT</b>		
Humidity	5% to 95% Relative Humidity (Non-condensing)	
Operating Temperature	-10°C - 50°C	
Storage Temperature	-15°C - 60°C	
<b>STANDARDS &amp; CERTIFICATIONS</b>		
Compliance	BIS, CE	
*Product specifications are subject to change without further notice		